

15 November 2024

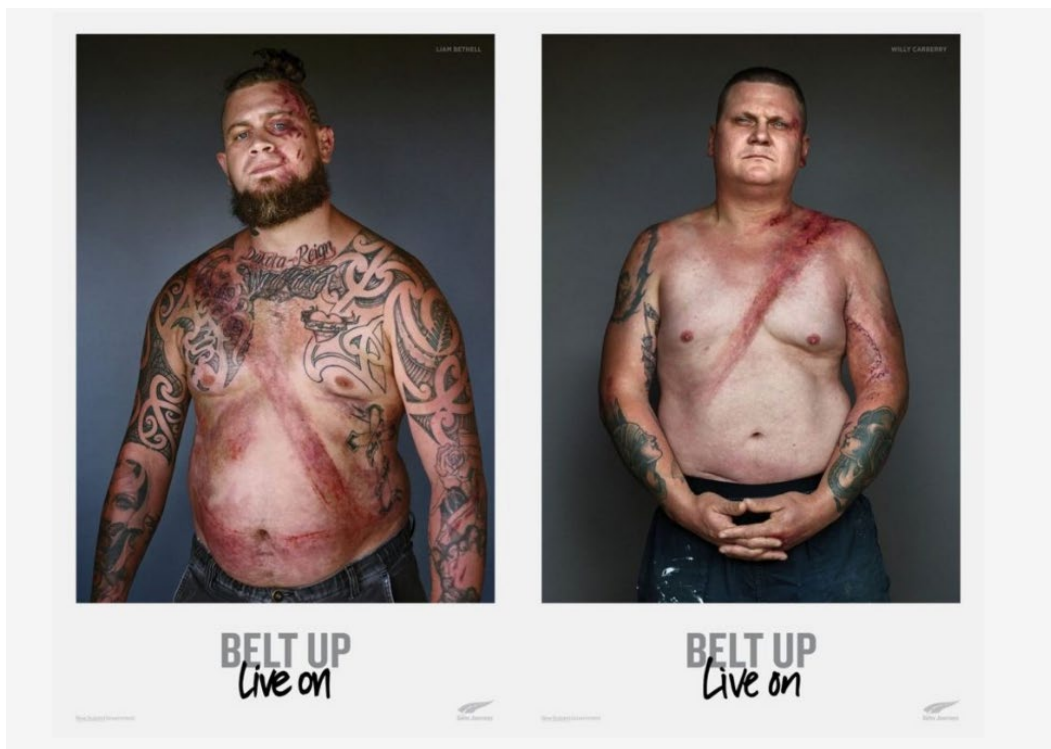
SAFETY ALERT

Wearing your seatbelt is a legal requirement and an MFM (NZ) Life-Saving Rule

You must wear your seat belt at all times in a moving vehicle

A recent incident involving a passenger not wearing a seat belt has resulted in a serious injury. Whether you travel 10 metres or 100 kilometres, you must wear your seatbelt in a moving vehicle or machine. Do not move your vehicle until you and all of your passengers are securely buckled in.

Non-seat belt fatalities account for 30% of overall motor vehicle deaths in New Zealand. Out of 200 fatal crashes studied, 150 of the victims were men. (ref: AA Research Foundation¹)



(Contagious.com²)

How seat belts work

A seatbelt is designed to prevent you from continuing to move forward if your vehicle comes to a sudden stop. The force on a seatbelt can be as much as **20 times your weight** – which is how hard you can hit the windscreen if you are not wearing a seatbelt.

“It doesn’t matter how far. Put your seat belt on!”

- <https://www.aa.co.nz/assets/about/Research-Foundation/Seatbelts/FINAL-Mackie-Seat-belt-fatality-report.pdf?m=1524198559%22%20class=%22type:{pdf}%20size:{4.2%20MB}%20file>
- <https://www.contagious.com/news-and-views/campaign-of-the-week-new-zealand-graphic-injuries-seatbelts-save-lives>